

Pi Artworks London:

Susan Hefuna: *CROSSROADS 2002-2016*
8 April – 14 May 2016

CROSSROADS 2002-2016 brings together three films from Susan Hefuna's CROSSROADS series, including a new iteration produced in London in collaboration with students from Trinity Laban Conservatoire of Music and Dance.

The CROSSROADS series exhibited at Pi Artworks London centres on different parts of the world in which two roads intersect. Each video consists of a stationary, single-take shot filmed from an upper floor window ledge. The camera's angle and motionlessness in addition to the absence of post-production creates a starkly empirical and evidential feel reminiscent of CCTV camera footage. They document interconnected bodies that influence each other's movement as they travel through small cross-sections of a city.

The recognisable aesthetic syntax underlying Hefuna's well-known sculptures and works on paper is the asymmetrical, fragile, intuitively composed grid like structure. Within the CROSSROADS series, the bodies moving through the space observed by the camera become the substitute for Hefuna's drawing and the crossroads become the guiding structural framework.

Within some works from the series, performers relaying notations devised by the artist move amongst those caught on camera going about their daily business. The subtle and quotidian nature of the performer's actions means that nothing is instantly recognisable as staged, yet their repetition makes them unsettlingly strange. Subsequently the actions of those unaware of being caught on camera become strange due to the heightened engagement and closer viewing of the spectator. The everyday and the rehearsed are overlaid and intermingle within the logic of the structure.

Each Crossroads is both an empirical record of real-time events and a subtly choreographed scene. To the viewer, it remains unclear which pedestrians are unaware they are being filmed and which, if any, are following their script.

For press information and images, please
contact: Neil Jefferies (nj@piartworks.com)
or call +44 207 637 8403

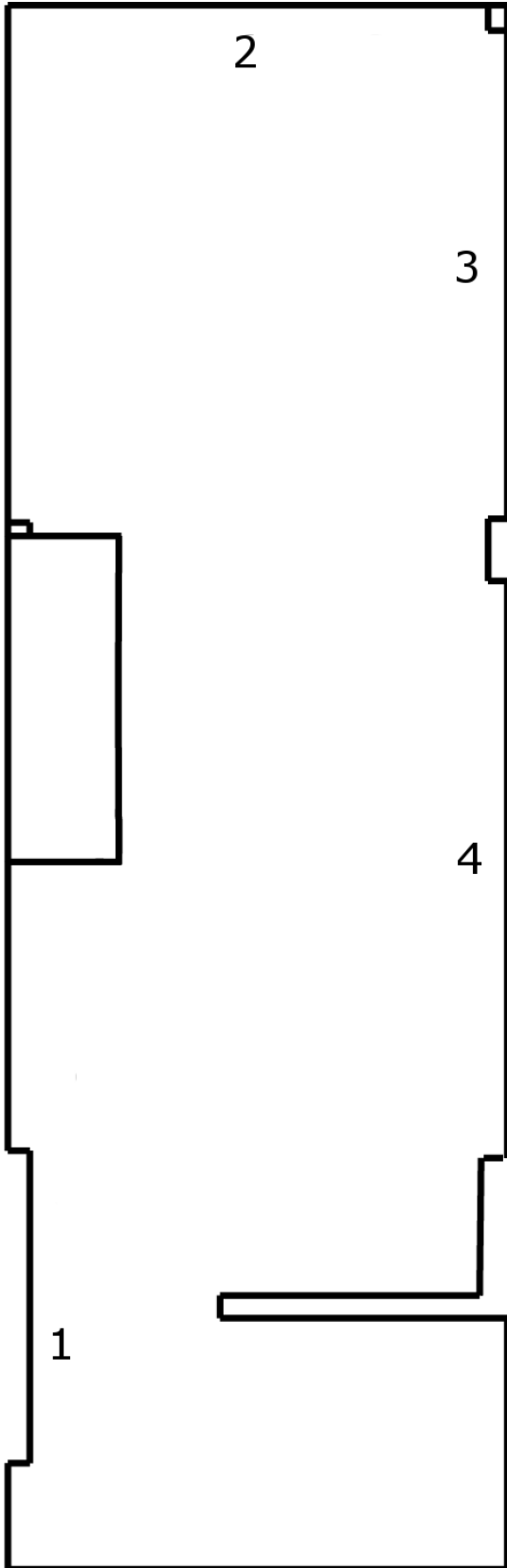
**TRINITY LABAN CONSERVATOIRE
OF MUSIC & DANCE**

Pi Artworks İstanbul

İstiklal Caddesi, Mısır Apartmanı 163/4
Galatasaray - Beyoğlu İstanbul 34430
Nearest underground station: Şişhane
Ph: +90 212 293 71 03 · info@piartworks.com

Pi Artworks London

55 Eastcastle Street
London W1W 8EG
Nearest underground station: Oxford Circus
Ph: +44 207 637 8403 · london@piartworks.com



1. *Temporary chalk drawing*, 2016, chalk
2. *LONDON CROSSROADS*, 2016, digital video, 150 minutes
3. *Via Fenestra, Frankfurt/Oder*, 2003, digital video, 60 Minutes
4. *Life in the Delta: 1423/2002*, 2002, digital video, 130 Minutes

Susan Hefuna, b. 1962. Major exhibition include, *But a Storm is Blowing from Paradise*, Guggenheim New York, USA curated by Sara Raza (2016); *Chers Amis*, Centre Pompidou, Paris, France (2016); *Barjeel Art Foundation Collection*, Whitechapel Gallery, London, UK (2016); *The Strange and the Familiar* (solo), UBS Schloss Wolfsberg, Switzerland (2015); *Contemporary Art of the Middle East*, LACMA, Los Angeles, USA (2015); *Susan Hefuna: Another Place* (solo), Sharjah Art Foundation, Bait Al Serkal, Sharjah (2014); *Buildings* (solo), Osthaus Museum, Hagen, Germany (2014); *Here and Elsewhere*, New Museum, New York, USA (2014); *NOTATIONSNOTATIONS*, The Drawing Center, NYC (2013); *Nouvelles Vagues- Champs Elysees*, Palais de Tokyo, Paris, France (2013); *On the Edgware Road*, Serpentine Gallery, London, UK (2012); *Edgware Road@Cairo 2010/1431* (solo), The Townhouse Gallery, Cairo, Egypt (2010); *On Line: Drawing Through the Twentieth Century*, Museum of Modern Art, New York, USA (2010); *Fare Mondi*, 53rd Venice Biennial, Italy (2009); and The Jameel Art Prize, Victoria and Albert Museum, London, UK (2009); *Museum as Hub: Antikhana*, (2018) New Museum, NY, USA.

In 2013 she received the international Guerlain Drawing Award in Paris.

Hefuna's work is documented in 3 Volumes *Pars Pro*

Toto I-III (2007-2014), by curator Hans Ulrich Obrist.